

A dramatic landscape of a tropical forest at sunrise or sunset. The sky is filled with vibrant orange and yellow light, with a large, dark tree trunk visible in the upper right corner. The forest below is dense and green, with a layer of mist or smoke rising from the canopy. A teal banner with a grid pattern is positioned across the middle of the image.

SECURE FORESTS [NOW]

WE REALLY DON'T HAVE MUCH TIME LEFT



*“Act as if the house was on fire,
because it is.”*

Greta Thunberg, Climate Activist

Our failure to secure the forests
is threatening global security

The illegal forest trades are
fuelling climate change...



... and pandemics

“Our continued erosion of wild spaces has brought us uncomfortably close to animals and plants that harbour diseases that can jump to humans.”

Inger Andersen, UN Environmental Programme

Impoverished communities are
being pulled into forests by
poverty and pushed into forests
by organised crime

At the community level, illegal forest
trades create multifaceted insecurity ...

POVERTY **VIOLENCE** **THIRST**
HUNGER **DISEASE**

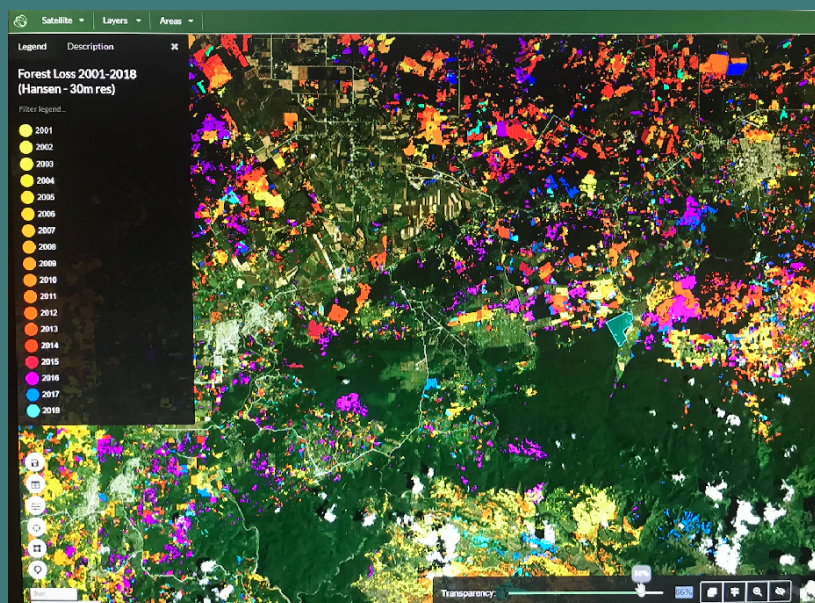
A person stands on a large, weathered tree stump in a vast, open landscape. The ground is covered in dry, golden-brown grass and numerous other tree stumps of varying sizes, suggesting a deforested area. In the background, a dense forest of trees with autumn-colored foliage stretches across the horizon, with rolling hills and mountains visible under a cloudy sky. The lighting is warm, indicating late afternoon or early morning.

Q: So, what can we do?

A: Holistic Forest Security

Multifaceted problems require multifaceted solutions. This is why **Secure Forests** takes a consortium approach to delivering our concept of *holistic forest security*. We curate project-specific expertise from disciplinary fields such as: protected area management; security risk management; terrestrial surveillance systems; Earth Observation (EO) technology; community engagement; agroforestry; forest restoration; climate smart economics; environmental crime investigation; national and transnational law enforcement and, of course, the local communities, NGOs and government agencies that host our interventions.

We then employ what military planners call **campaign** methodology – carefully synchronizing the activities and impacts of multiple interdependent lines of action towards a common end-state (secure forests). Through our data-fusion & visualization platform we are able to build and share a synthesized **common operating picture** of the current situation on the ground, eventually feeding our AI machine with enough data to become predictive in its analysis.



Incredible advances in EO technology allow us to accurately measure the impact of our projects – down to one tree. When we are succeeding, the satellites will tell us that the forests are growing – not shrinking – while local communities tell us the forest is more valuable to them alive than dead.

Holistic Forest Security

Data-Driven Enforcement

- satellite monitoring
- terrestrial sensors
- data fusion
- AI analysis

Invested Communities

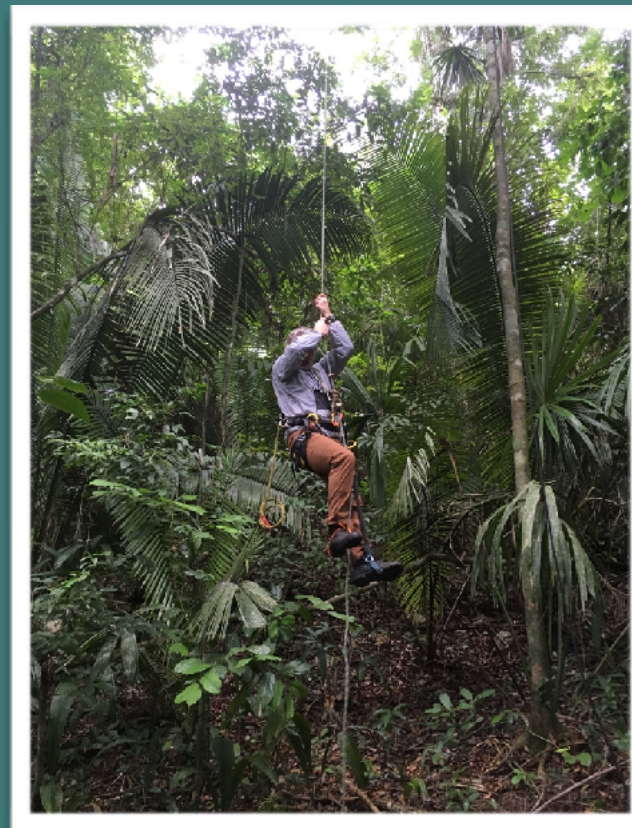
- forest-friendly jobs
- routes-to-market
- renewable energy
- connectivity

Dismantle Illegal Trades

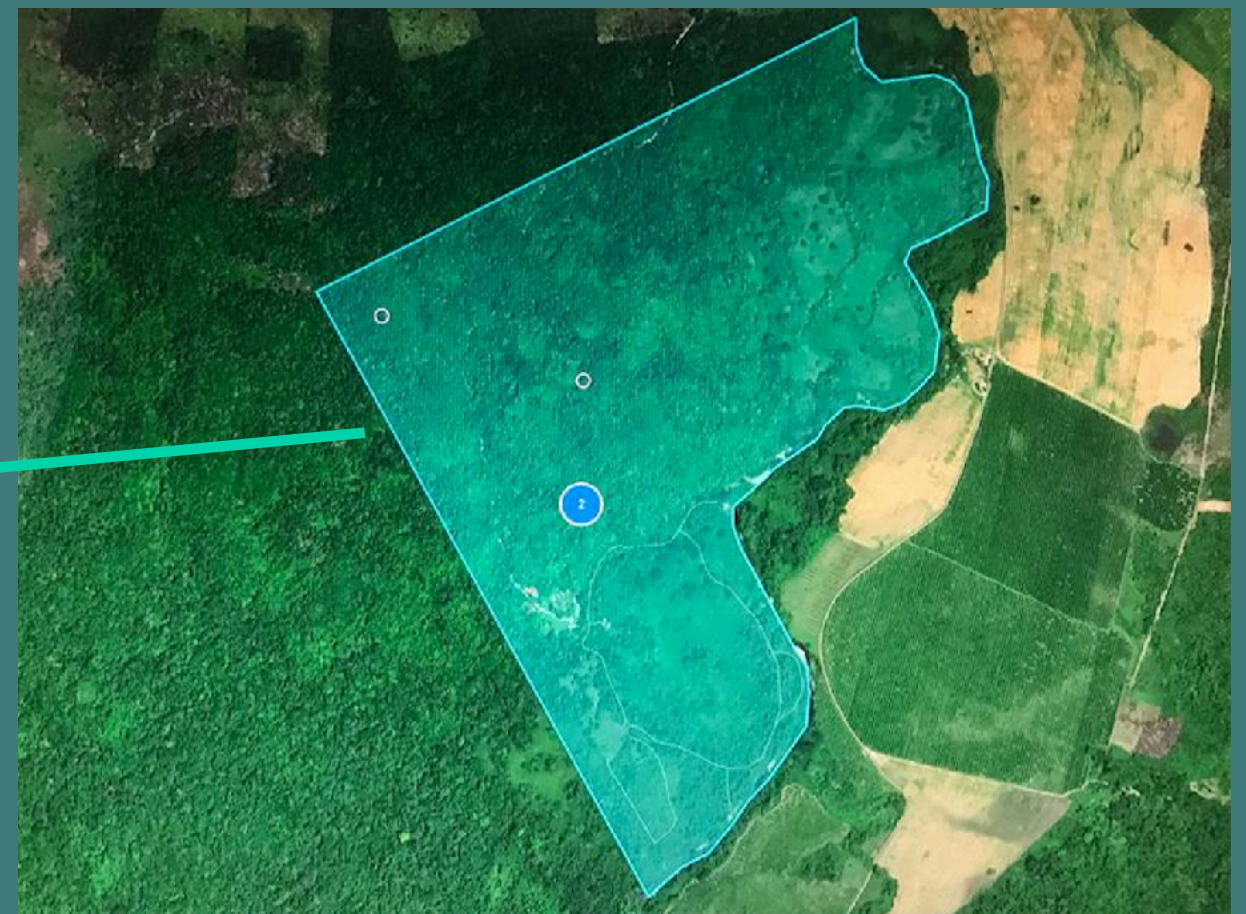
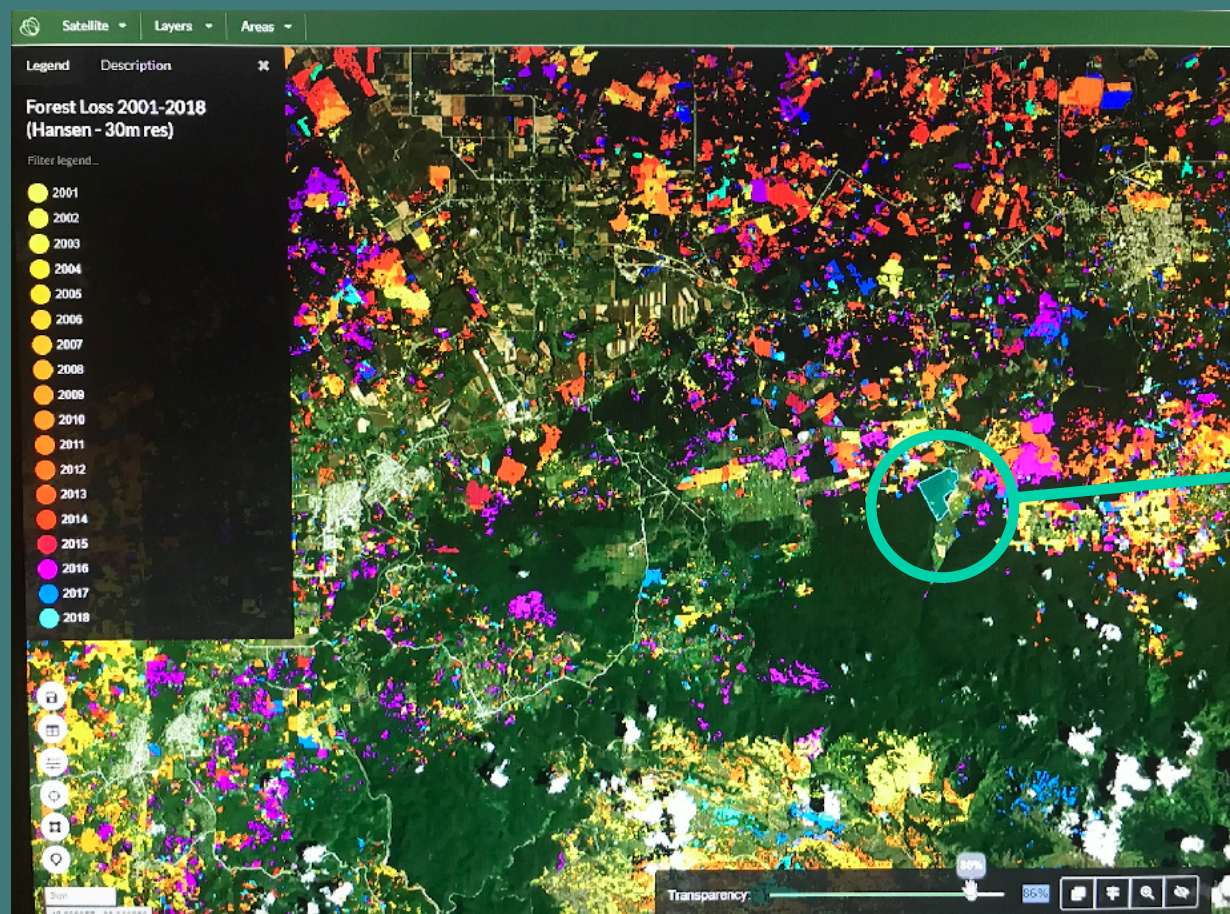
- evidential operations
- share forest crime data
- transnational collaboration

Test Case - Belize

Funded by the Oak Foundation, our pilot project on a private reserve in Belize is succeeding in proving the technological component of our concept. In January 2020, Secure Forests and our partners Rainforest Connect, installed 4 acoustic sensors up to 100' high in the canopy. The sensors have since sent regular alerts of chainsaws, chopping and suspicious vehicle movement across the reserve's 300 hectares. Reserve wardens are already seeing patterns and trends that are shaping their enforcement operations, with the Ecometrica platform providing EO data on changes in canopy coverage, as well as a visualization of all sensor data on a monitor in the Operations Room. Despite the current pandemic, Secure Forests is working remotely with the wardens to refine their strategy, operations and tactics to take advantage of their greatly enhanced domain awareness.



The next step will be to deploy the SMART Ranger app on warden's cell phones, so that their patrol reports can be uploaded instantly to the Ecometrica platform.



SECURE FORESTS

Partners

The core partners in our Secure Forests are:



As the world faces the harsh reality of just one of the consequences of failing to secure our forests, we urgently need your financial support to scale our novel approach around the world.

We really don't have much time left.

If you are interested and would like to learn more about our work and its possibilities, please reach out to us at: tellmemore@secureforests.com