



SECURE FORESTS[NOW]



“Act as if the house was on fire, because it is.”

Greta Thunberg, Climate Activist

Failure to secure forests is threatening
global security.



The illegal forest trades fuel climate change...



...and pandemics

“Our continued erosion of wild spaces has brought us uncomfortably close to animals and plants that harbour diseases that can jump to humans.”

Inger Andersen, UN Environmental Programme



Impoverished communities throughout the world are being pulled into the forests by poverty and pushed into the forests by organised crime.

An aerial photograph showing a dry, cracked riverbed. A small, dark pool of water is visible in the upper right corner. The surrounding landscape is arid and covered with dry, yellowish-brown grass and shrubs. A teal-colored rectangular box is overlaid on the image, containing white text.

At the community level, illegal forest trades create multifaceted insecurity ...

poverty

violence

thirst

hunger

disease

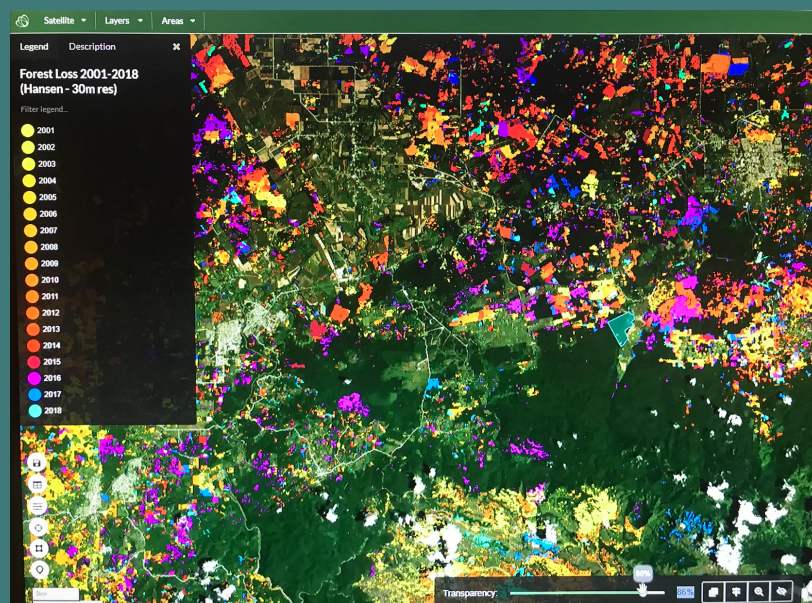
Q: So, what can we do?



A: Holistic Forest Security

Multifaceted problems require multifaceted solutions. This is why Secure Forests takes a consortium approach to delivering our concept of *holistic forest security*. We curate project-specific expertise from disciplinary fields such as: protected area management; security risk management; terrestrial surveillance systems; Earth Observation (EO) technology; community engagement; agroforestry; forest restoration; climate smart economics; environmental crime investigation; national and transnational law enforcement and, of course, the local communities, NGOs and government agencies that host our interventions.

We then employ what military planners call *campaign* methodology – carefully synchronizing the activities and impacts of multiple interdependent lines of action towards a common end-state (secure forests). Through data-fusion & visualization we are able to build and share a synthesized *common operating picture* of the current situation on the ground, eventually feeding our AI machine with enough data to become predictive in its analysis.



Incredible advances in EO technology allow us to accurately measure the impact of our projects - down to one tree. When we are succeeding, the satellites will tell us that the forests are growing - not shrinking – while local communities will tell us the forest is more valuable to them alive than dead.

Holistic Forest Security

Data-Driven Enforcement

- satellite monitoring
- terrestrial sensors
- data fusion
- AI analysis

Invested Communities

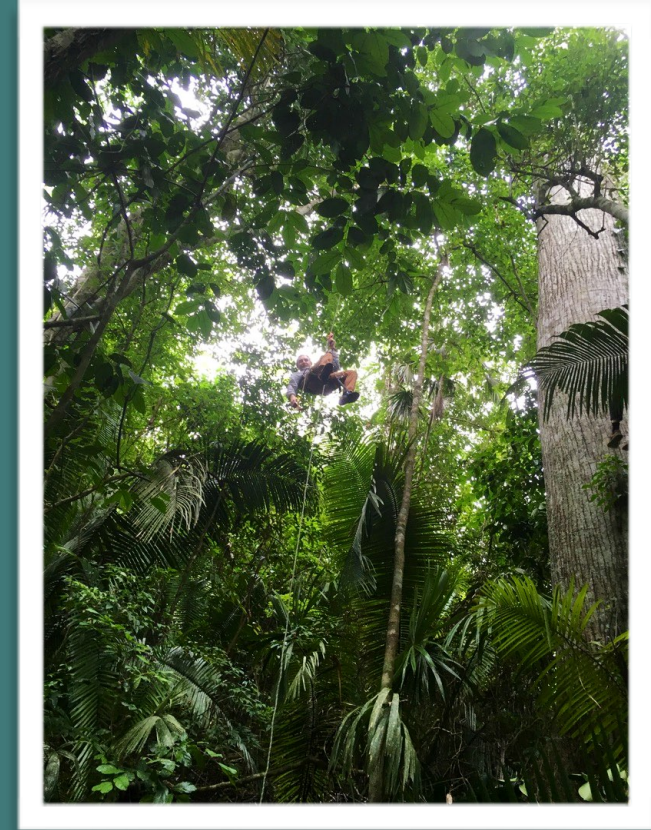
- forest-friendly jobs
- routes-to-market
- renewable energy
- connectivity

Dismantle Illegal Trades

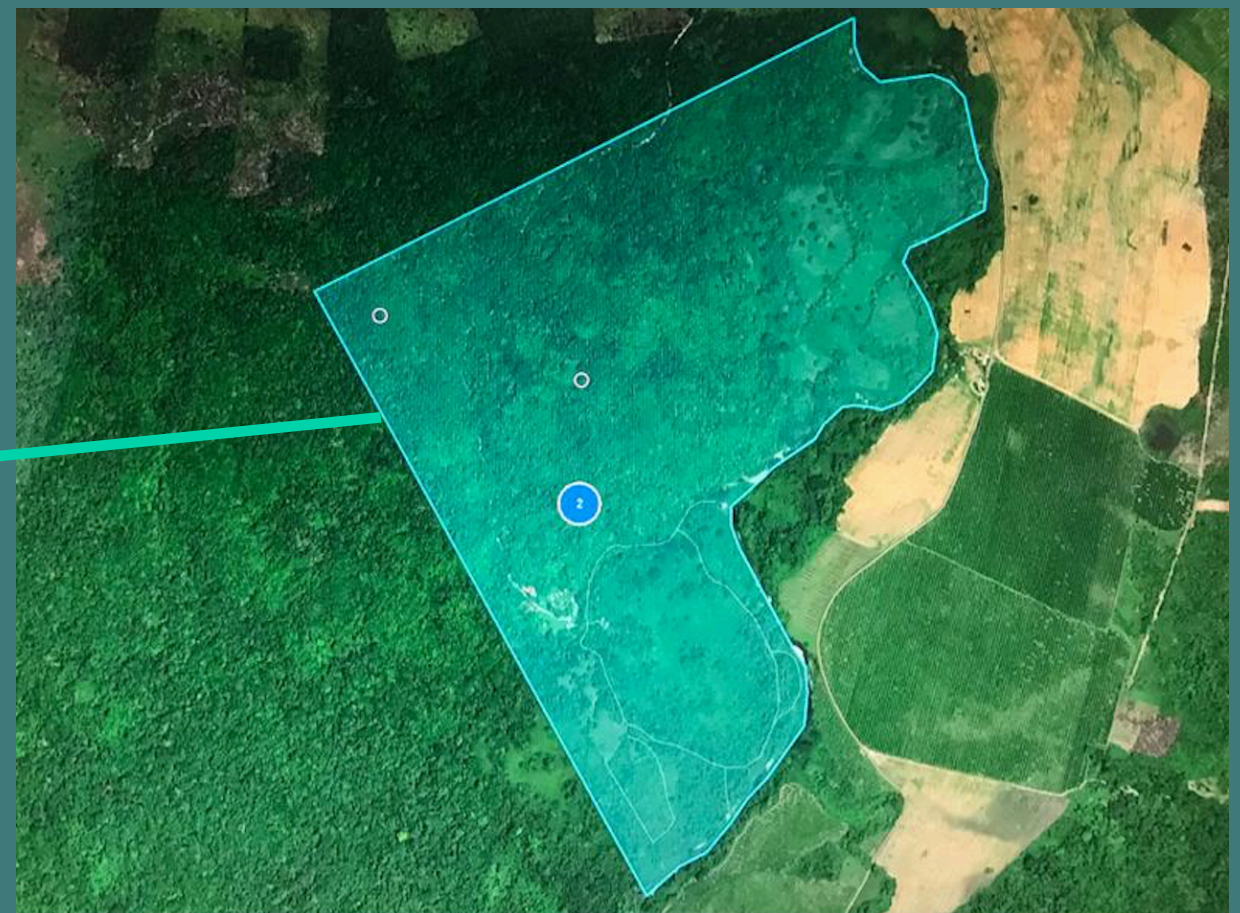
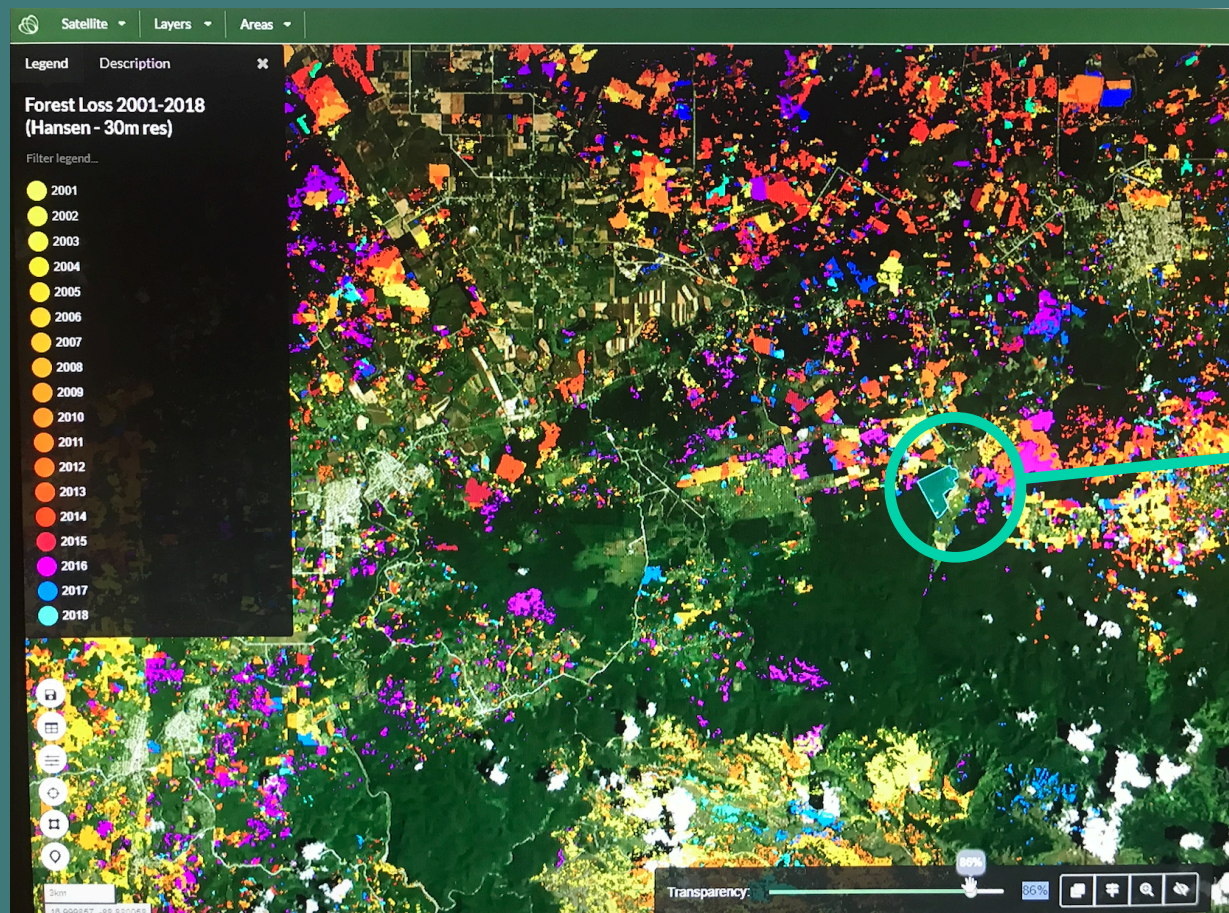
- evidential operations
- share forest crime data
- transnational collaboration

Test Case - Belize

Funded by the Oak Foundation, our pilot project on a private reserve in Belize has succeeded in proving the technological component of our concept. In January 2020, Secure Forests installed 4 acoustic sensors up to 100' high in the canopy. Reporting to rangers' phones and the Operations Center, the sensors have been sending 24/7 alerts of chainsaws, chopping and suspicious vehicle movement across the reserve's 300 hectares. With an app to feed their own patrol reports into the data fusion platform, the rangers are already seeing patterns and trends that are shaping their enforcement operations.



As well as data fusion and visualization, the Ecometrica platform overlays EO satellite data showing recent and historic changes in canopy coverage. Despite the current pandemic, Secure Forests is working remotely with the rangers to refine their strategy, operations and tactics to take advantage of their greatly enhanced domain awareness. We will soon be ready to use our completed pilot project for system demonstrations and training as we deploy holistic forest security on the frontlines of deforestation around the world.



SECURE FORESTS

Partners



As the world faces the harsh reality of just one of the consequences of failing to secure our forests, we urgently need your financial support to scale our novel approach around the world.

We really don't have much time left.



If you are interested and would like to learn more about our work and its possibilities, please reach out to us at:

tellmemore@secureforests.com